

ARDUINO BASED SMART SHOE SYSTEM FOR WOMEN SAFETY, DEFENSE AND INTEGRATED INTELLIGENT TRACKING

Mr. Sarphale D. Y.

Head of department of Electrical Engg

Rajaram Shinde Institute of Engineering and Technology, Pedhambe Chiplun

Mr. Chavan Atharv Nandkumar

Mr. Chavan Mayur Dayanand

Mr. Helonde Om Sakharam

Mr. Adawade Soham Shudir

Students of Department of Electrical Engg.

Rajaram Shinde Institute of Engineering and Technology, Pedhambe Chiplun

Abstract:

In this project a smart safety shoe for women has been presented. The whole system uses GPS and GSM modems, electric shock circuit and Arduino microcontroller board. GPS receiver works as the detector, it fetches the location of the concerned accident in the form of latitude and longitude. GSM sends the latitude and longitude information as a SMS to predefined number with the help of programmed microcontroller. It also sends a phone call to one phone number. Microcontroller works as the backbone of the system. Whole system can be activated by just a single press of panic button. Hardware representation of the system shows overall compact assembled system inside a ladies shoe sole for greater reliability of stated work. Real time processing of data's is presented in various figures.

Keywords: Women Safety, IoT, Live Streaming, GPS, GSM, Smart Shoes, Arduino

1. INTRODUCTION

In today's scenario women safety has come out as an important matter of concern, for people and also for law enforcing authority. The no of women harassment and eve-teasing cases has risen by many folds due to the greater disclosure of women in every part of life. Number of physical harassments of women in schools, work places or even in public transports is soaring daily. It has become a societal crisis in many countries. In spite of implementing so many rules and regulations for women, it doesn't stop thieves, assaulters or molesters to misbehave with women. This work by authors tries to define a self-sufficient solution of the women safety question. From several years law enforcement agencies and common people are searching for built-in technologies to control these cases. Several devices are there to help this problem.

According to Indian perspective there are mobile apps in the market developed for the safety of women specifically designed for android or iOS, some of which have paid premium features that may help to save a life in threatening situations, for example, apps like 'VithU', 'Smart Shehar' etc. allows one to send SOS alerts to the listed contacts by just pressing the power button of the phone twice or even take the picture. It also sends the GPS location of the incident or where the victim is

present. Problems associated with these smart phone applications are that, if a woman gets into any trouble, then she might not be able to use her hands to activate the app and send her location because in most cases the attacker firstly grabs victim's hand and close her eyes too. Apart from several mobile apps some built in smart devices are there for safety of women. Smart shoes for women safety use GPS, GSM modules, and a shock circuit, which are interfaced with Arduino. If the victim is facing any kind of danger, she can immediately make use of this device, embedded in their shoe to escape from the dangerous situation and even harm the attacker.

Our project has tried to solve the problem with a built-in smart, off the shelf, compact device inside a lady's shoe. As proposed in these work, smart shoes for women safety comprises GPS and GSM modems & electric shock circuit. Inside this system GPS receiver works to detect the location of the incident with the help of satellites in the form of latitude and longitude data. GSM module will send a predefined SMS along with latitude and longitude data with the help of micro- controller. The GSM modem sends a particular SMS; like "I am in a trouble" and also sends the current location of the device to the predefined mobile numbers. When a woman is in any kind of critical situation then the system can be activated by just

pressing the panic button. To activate the whole system the victim has to press the switch, which is located inside her shoe. If any woman finds any trouble or in any kind of hazardous situation, she can immediately make use of the device, studded inside her shoe to escape from that situation and also to inform her dear ones or guardians about her situation. Victim can even harm the attacker by using the current shock which released from the other pair of the shoes. This projects a women safety shoe that not only helps women take care of themselves but also help them be fearless. This project makes use of GPS, GSM modules, a shock circuit and Arduino

2. METHODOLOGY

The shoe represented here is practically user friendly for day-to-day life. The best part of this device is its compact structure. All the modules, power source and devices are engraved inside the shoe sole, making it a practically viable and r friendly for any woman's daily life. A switch has also been added in the shoe, so that she can press that switch which is located in the shoe by just using her feet. It is useful if the victim is not able to use her hand because sometimes the attackers might lock her both hands and close her eyes too. As an added layer of security, a feature has been incorporated that when the victim activates the switch then it will automatically send a particular SMS to a predefined phone number and also it sends a phone call to a predefined phone number.

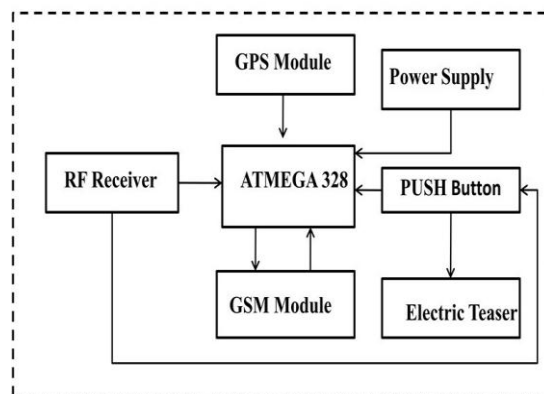
When the victim will activate the whole system then it will send her location to the allotted phone number using a text message, with latitude and longitude details. Receiver of the message can easily trace the location of the victim using Google Map and provided latitude and longitude data with a single click. It is not always necessary that the location of incident remains static in that same location. Sometimes molesters can drag the victim to any other location. In that time if the phone numbers which are allotted sends any SMS to that "shoe" then it will automatically navigate her real time current location and will send the details as latitude and longitude to that number.

For defense purpose an electric shock system has also been incorporated inside device, which resides to the lower part of the shoe. For that when the girl will be trying to get rid of eve teaser, she can easily use this electric shock. And though the output is in the lower side of the shoe sole and

far from her feet that's why she cannot be affected by the shock. If any call comes from the predefined phone number to the shoe, it will be automatically received using GSM module. Caller can listen to the real time ambient sounds at the place of incident.

This shoe consists of GPS module, GSM module, shock circuit, 433rf transmitter and receiver, Arduino nano, battery. The basic idea of this device is to send SMS and phone call along with the location to the emergency contacts by pressing any emergency switch which is located on in the shoe. Here a shock circuit is used in this device which produces a shock of 600KV that is sufficient to harm the assaulter and gives enough time to escape for the victim. The main controller used in this project is an Arduino Nano microcontroller. GPS and GSM modules connected to microcontroller, and also connected to a 433 RF receiver and its triggering is provided by a RF transmitter. A 3.7v, 2000mAh battery has been used as power supply for operation of the whole system.

3. BLOCK DIAGRAM



4. SYSTEM ARCHITECTURE

The system comprises different components as discussed in the previous sections. Internal microcontroller other modules and circuit diagrams are thoroughly presented here. The main part of the system is microcontroller; here in this device Arduino Nano has been used as the microcontroller. Arduino is an open-sourced, off-the-shelf, compact platform used for manufacturing and programming of small-scale electronic devices.

The Arduino is a very popular, low cost, light weight programmable microcontroller board. Arduino boards can be accessed with the use of a simple USB cable to upload the program, and the software of the Arduino, namely Arduino IDE, uses a simplified version of C, making it more accessible than other microcontroller boards to the researchers. In project we have used Arduino Nano 3.0. Arduino Nano 3.0 is shown in the Figure 2. It is a 30-pin board having ATMEGA328 as microcontroller embedded inside it. From Figure 3 it can be seen that Arduino Nano has 14 digital I/O pins, 8 Analog reference pins and has a clock frequency of 16MHz [5], crystal oscillator of frequency 16 MHz is used for this purpose. With large number of I/O ports it is possible to connect large number of sensors to Arduino boards.

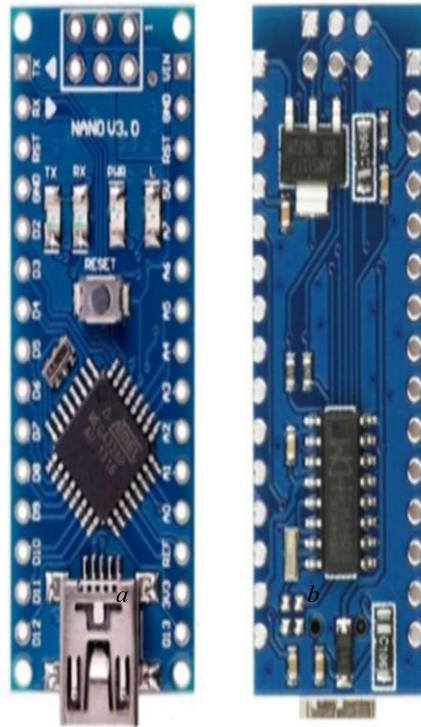


Figure 2: (a) Front view of Arduino Nano 3.0 (b) Back view of Arduino Nano 3.0

Arduino Nano can be powered by simply with a Mini type - B USB and it has an operating voltage of 5V. Recommended input voltage for Arduino is 7-12 V. It can also be powered using external power source or battery.

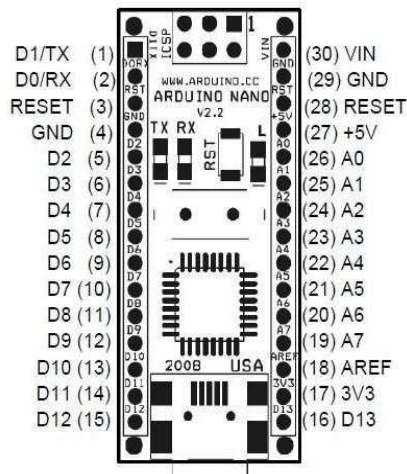


Figure 3: Pin diagram of Arduino Nano

Using 6-20 V unregulated external power supply or 5V regulated external power supply. Power source is automatically selected to the highest voltage source applied. ATmega328 microcontroller provides several interesting communication features for having communication with a PC or another Arduino or server or cloud or any other microcontroller board. From figure it can be seen that there are two digital pins D0 and D1 for typically dedicated use of transmission (Tx) and reception (Rx) purpose. D0 and D1 pins are available with UART TTL serial communication. Tx and



Rx LEDs are present on the Arduino board. They will flash when the data is being transmitted via USB connection to and from the computer. ATmega328P has 32 KB flash memory for storing code.

Figure 4: SIM800L GSM module (Front View)

SIM800L GSM module has been used in this system. The SIM800L module has total 12 numbers of pins that perfectly interfaces it with the outside world. It is basically used for sending messages and to make and receive calls. The module consists of a helical antenna which acts as the means for making and receiving calls and messages. The operating voltage of SIM800L is 3.4 V to 4.4 V. Micro SIM slot is provided with this module for inserting SIM card. It also has LED status indicator.



Figure 5: NEO-6M GPS module 6500

To serve the purpose of GPS module the NEO-6M Global Positioning System (GPS) module has been used in this device. It's a very economical and high performance 24 pin GPS module available in the market. It comprises of a ceramic patch antenna above all, it has one MS621FE-compatible rechargeable battery for backup and EEPROM for storing configurations. The module works well with a DC input in the 3.3 to 5V range. FS100A RF Transmitter – receiver module [13] is used for

wireless purpose of the system.

FS 100A works at 433MHz frequency, it is one of the cheap and easy to use RF modules for all wireless systems. These modules can be used only in pairs and only simplex communication is possible. The module could cover a minimum of 3 meters to 30-35 meters practically in a normal test condition. Operating voltage of FS100A wireless module is from 3V to 12 V. The system is rechargeable. Rechargeable battery has been added to the system for smooth operation. Li-Po (Lithium Polymer) rechargeable battery of 3.7 V and 2000mAH has been used in this device. Circuit arrangements for both the shoes are presented here in the figure. Figure 6 represents the right shoe and Figure 7 represents the left shoe.

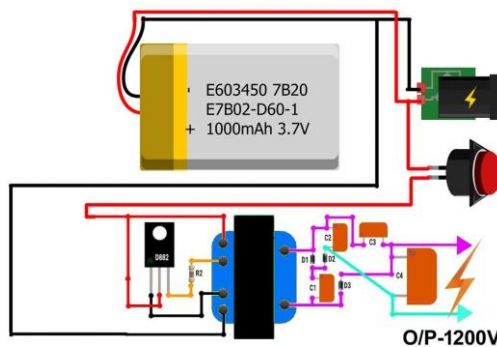


Figure 6: Circuit diagram for right leg shoe

Right shoe is studded with shock circuit arrangements for self-defense purpose of the victim. One can easily activate the shock arrangements by just pressing a push button switch, residing inside sole of the left shoe.

Left shoe is entirely for safety and tracking purpose. Arduino Nano, which works as the main part of the system has been engraved inside the lower part of left shoe. GPS, GSM modules, Rx and Tx module and a mic has also been attached with the microcontroller and studded inside the left shoe. It is also a push button activated circuit. In both the shoes Li-Po batteries are used for power supply.

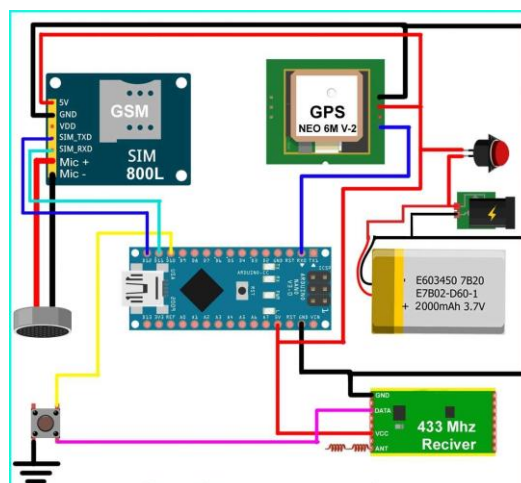


Figure 7: Circuit diagram for left leg shoe

5. HARDWARE MODELLING

As mentioned in the introduction section the main purpose of this work is to answer the question of portability and off-the shelf use of smart safety systems. It can be seen most of the device, proposed or designed earlier, by the researchers are not user friendly. This smart shoe is capable to serve the need of ready to use device in the market. In figure the ready to use, off the shelf prototype of the device is presented. The push button switches can be seen in red color at the sole of both the shoes. No external wires, connections and batteries are needed

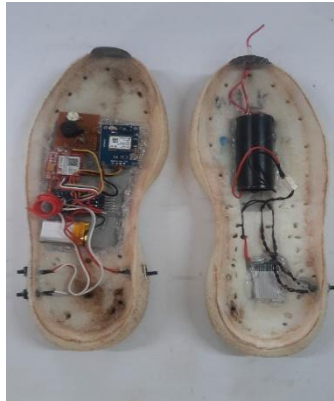


Figure 8: Shoe prototype presentation

While us using the device. Each and every module such as microcontrollers, GPS, GSM and batteries are engraved inside the sole of the shoes. In Figure 9 the inner view of the shoe sole can be seen. Only the left shoe is shown here for visual purpose.

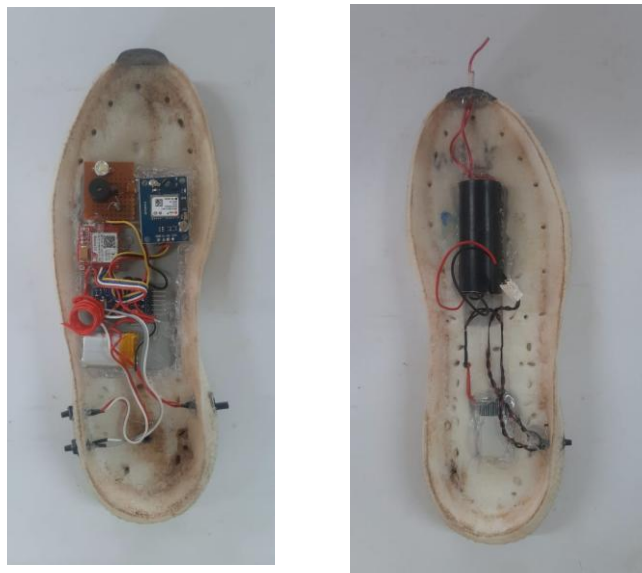


Figure 9: Inner view of the shoe while assembling

As said earlier the RF receiver is studded inside the left shoe, whereas, the RF transmitter has been used to active the left shoe circuit. Transmitter activates as soon as victim press the push button located on the shoe.

Supplementary push button switch has been provided in the left shoe, can be seen in figure. User can activate the whole system by using the switches. The shock circuit will be activated as soon as the user press the push button switch on the left shoe. From Figure 11 shock probes can be seen at the front of the left shoe.

6. SYSTEM OUTPUT

System will start to work as soon as the user activates the push button located at the right shoe. The system will send an SOS alert SMS to prestored number using the GSM module used in this device. In figure it can be seen that the device sends a message 'PLZ HELP ME' to number as stored by the user along with the latitude and longitude value of the present location of the victim. In this device victim's real time location can be tracked and traced.

It is possible if the show receives 'Send.Loc' message from the prestored number. In revert to that SMS the device or the show will send its real time location, so that it can be tracked in a real time manner. The message also comprises the Google Map link with which the receiver of the message can easily find the location of the victim using Google map just in a click. In figure the Google map view can be seen. The device is also capable of calling, using the GSM module. It can call one number among the prestored number. A mic is connected with the GSM module and engraved inside the left shoe, so the receiver can easily listen to the sound of the location at which the victim is present and can help the victim.

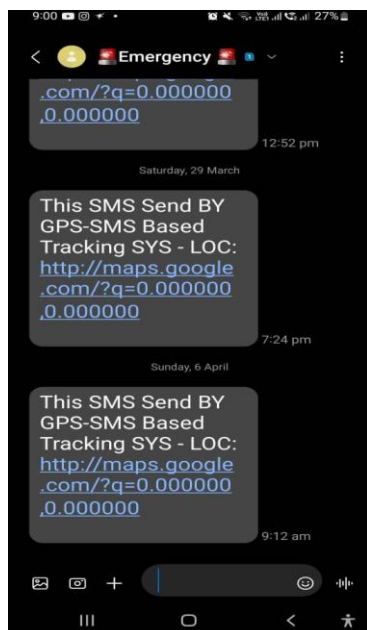


Figure 10: SOS Alert

Figure 11: Real time Google Map view of the location of incident

For self-defense purpose a 1200 V shock has been used here in this shoe. User can easily activate the Shock circuit by pressing the push button switch studded inside the sole of her right shoe. In figure we can see the shock arrangement, by just placing a wire in front of the shock circuit probes, attached in front of the right shoe.

ADVANTAGES:

Compact & Portable: All components are embedded in the shoe sole, making it convenient for daily wear without external wires or bulky attachments.

Hands-Free Operation: Activation through a foot-press switch is critical when the victim's hands may be restrained.

Real-Time Location Tracking: Sends GPS coordinates via SMS and Google Maps link for easy tracking by family or authorities.

Instant Alerts: Sends SOS message and makes an automatic phone call to pre-stored numbers.

Self-Defense Feature: Includes an electric shock system to deter attackers, giving the victim time to escape.

DISADVANTAGES:

Physical Durability Concerns: Embedding electronics inside shoes may raise issues with wear and tear, moisture, and shock damage over time.

False Alarms: Accidental presses might trigger unnecessary alerts or shocks.

Dependence on Network: GSM module needs network coverage to send messages or make calls, which may be unavailable in remote areas.

CONCLUSION

This smart safety shoe for women is a ready to use device for day-to-day use of women. As far as the extent of the knowledge of both the authors, no such off the shelf and ready to use device is present which can be used by women for safety purpose. In this device no such complex charging circuit is needed, nor any kind of wires can be seen from outside. The sole motive of this work has been to deliver a ready to avail and portable solution for smart women safety device.

REFERENCES

1. NEO- 6M GPS Module Data Sheet, retrieved date: September, 2020 [Online]. Available: <https://www.u-blox.com..>
2. Arduino Nano 3.0 Data Sheet , retrieved date: September, 2020 [Online], Available: <https://www.arduino.cc/>.
3. Google Maps [Online], Available: <https://www.google.com/maps>,
4. SIM800L GSM Module Data Sheet, retrieved date: August, 2020 [Online], Available: <https://simcom.ee>
5. SIM800L GSM Module Data Sheet, retrieved date: August, 2020 [Online], Available: <https://simcom.ee>